

The New Benchmark for Pharma's Direct-to-Patient Shift

Providing a coherent and seamless ecosystem of direct-to-patient (DTP) services that removes barriers within the healthcare system and helps more patients access the therapies they need.

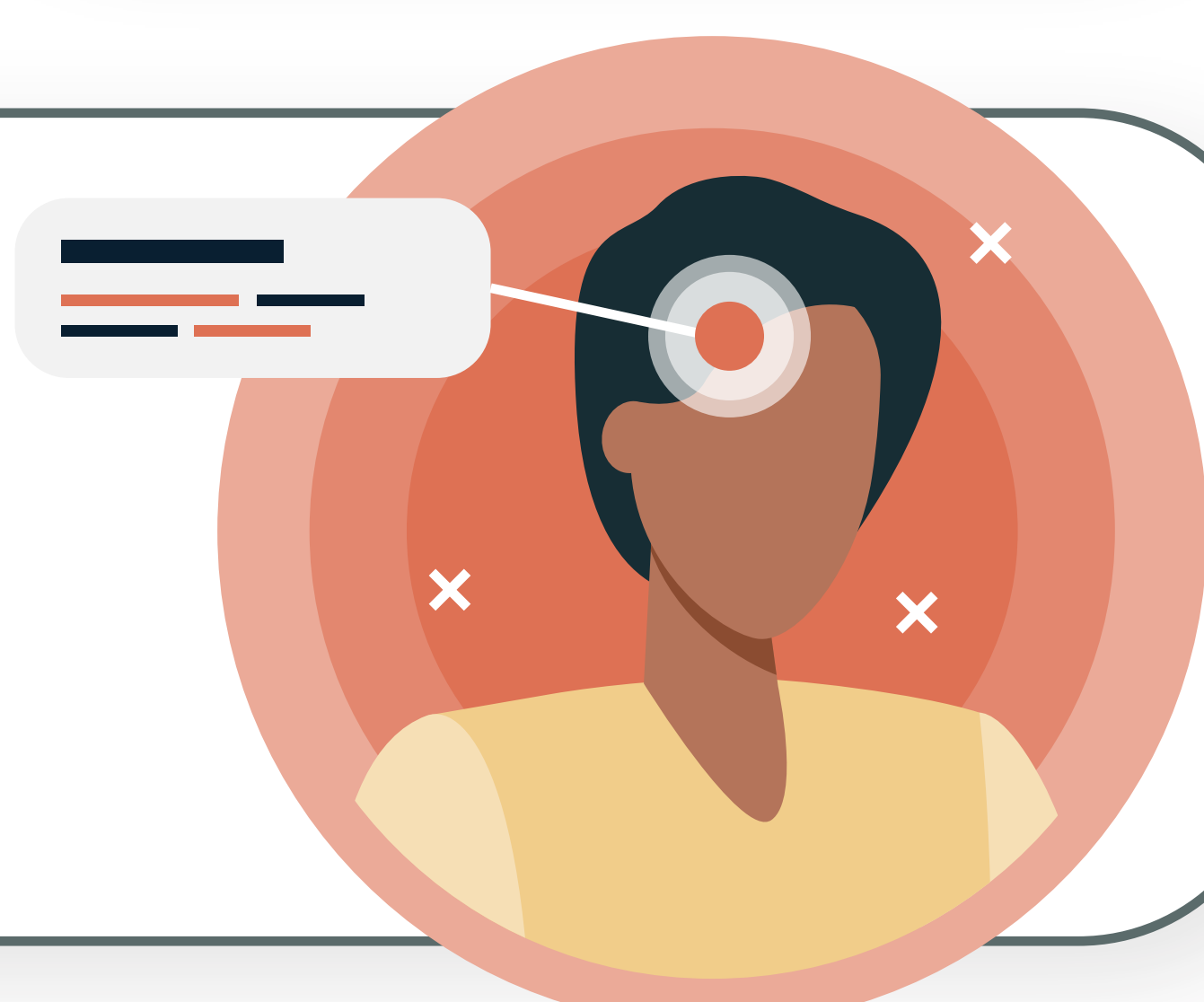
Disease & treatment awareness

Above-brand disease awareness and education

Speed up diagnosis

Education on available treatment options

- Symptom education tools that are personalized, adaptive, and multilingual
- Digital self-assessment using symptom checkers
- Algorithmic identification of high-risk patients that prompts clinicians within their workflow
- Data mining to identify high-risk patients and generate candidate patient lists



Care navigation, telehealth & diagnosis

Telehealth or in-person consultations to support diagnosis and issue ePrescriptions (eRx)

Electronic prescribing (eRx) to streamline treatment initiation

Personalized care plans tailored to individual patient needs



- Curated provider networks to ensure high-quality, consistent patient experience
- Integrated diagnostics to support accurate and timely diagnosis

Access & affordability

Visibility into reimbursement status, including prior authorization, insurance coverage, and benefit eligibility

Fast prior authorization and benefit verification

Cash-pay and self-pay options for patients without coverage

Cost transparency for patients, including affordability options, financial assistance, and copay support

Fulfillment

Patient home delivery

Pharmacy pick-up

- Specialty pharmacy or non-dispensing pharmacy partnerships to provide fulfillment



Disease management & treatment support

Disease management support

Treatment initiation and onboarding

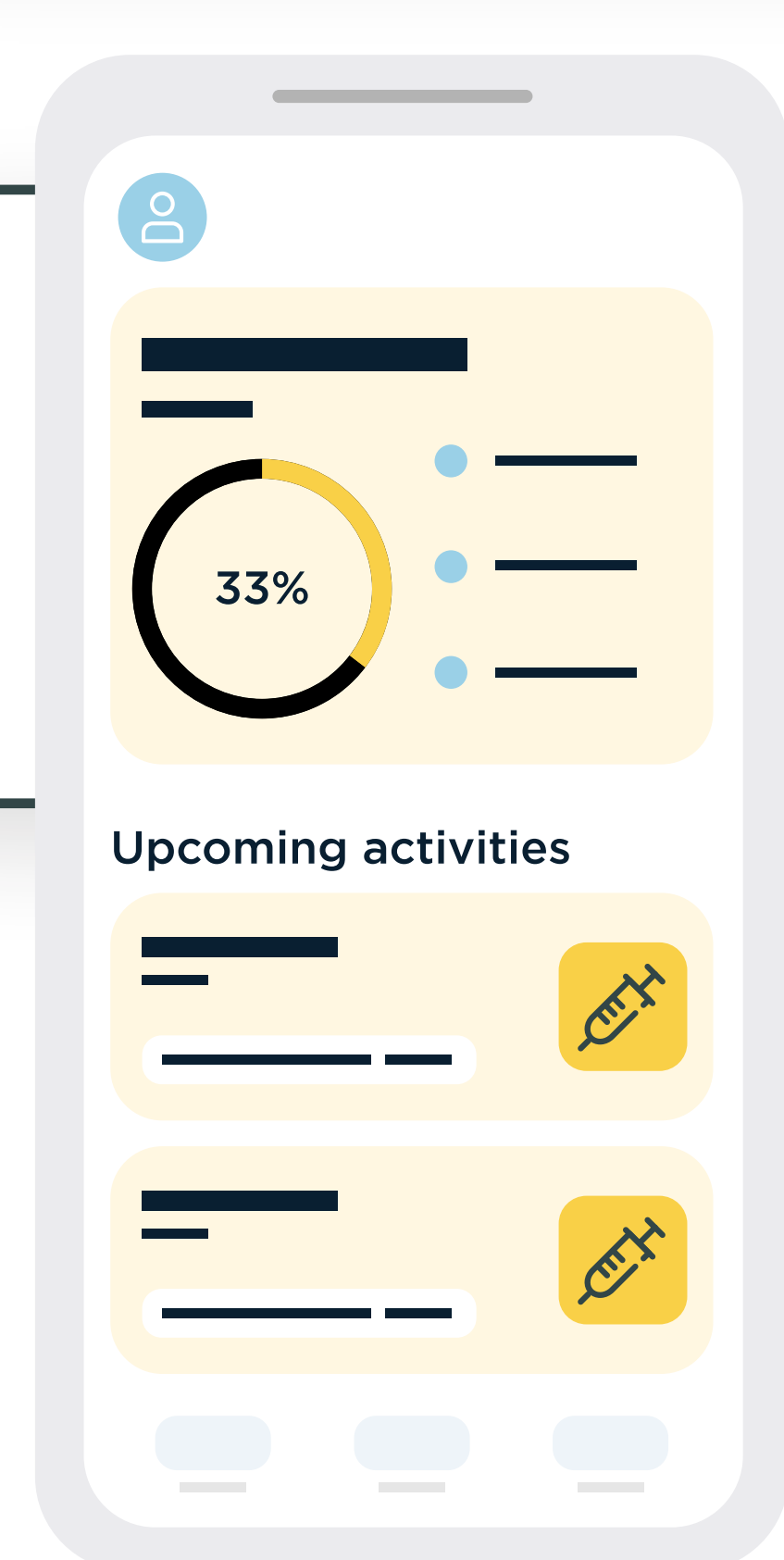
Personalized care plans aligned with clinical governance

Support for co-morbidities impacting treatment outcomes

Ongoing patient support throughout the treatment journey

PSP integration

- Adherence and persistence programs
- Digital companion tools supporting the care model and personalized care plans
- Connected drug delivery devices (where appropriate)
- Digital therapeutics (DTx) supporting specific parts of the care journey (where appropriate)



Ready to take your DTP program to the next level?

Contact us today: Info@S3ConnectedHealth.com

